



Product Service

# CERTIFICATE

No. Z1A 15 10 14229 048

**Holder of Certificate:** Reutlinger GmbH  
Offenbacher Landstr. 190  
60599 Frankfurt  
GERMANY

**Certification Mark:**



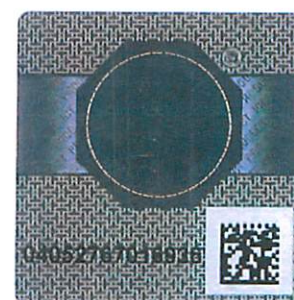
**Product:** Cable holders  
Type 10

**Tested according to:** PPP 52347A:2012  
AfPS GS 2014:01 PAK

The product meets the safety and health requirements of the German Product Safety Act section 20 to 22 ProdSG. The certification marks shown above can be affixed on the product. It is not permitted to alter the certification marks in any way. In addition the certificate holder must not transfer the certificate to third parties. This certificate is valid until the listed date, unless it is cancelled earlier. See also notes overleaf.

**Test report no.:** 713066673

**Valid until:** 2020-10-19



**Date,** 2015-10-20 (Edgar Harnisch)

Page 1 of 2



Product Service

## CERTIFICATE

No. Z1A 15 10 14229 048

**Model(s):** Type 10

**Parameters:**

rope-Ø 0,45 mm: working load 1,5 kg for stainless steel cable  
breaking force 75 N for stainless steel cable

rope-Ø 0,54 mm: working load 2,5 kg for stainless steel cable  
breaking force 125 N for stainless steel cable

rope-Ø 0,63 mm: working load 3,0 kg for stainless steel cable  
breaking force 150 N for stainless steel cable

rope-Ø 0,81 mm: working load 7,0 kg for stainless steel cable  
(8 kg for galvanized steel cable)  
breaking force 350 N for stainless steel cable  
(400 N for galvanized steel cable)

rope-Ø 1,0 mm: working load 10 kg for stainless steel cable  
(11 kg for galvanized steel cable)  
breaking force 500 N for stainless steel cable  
(550 N for galvanized steel cable)

allowed wire cable:

cable type: galvanized steel, 7x7 according to  
DIN EN 12385-4:2008

cable strength: minimum 2300 N/mm<sup>2</sup>

cable type: stainless steel, 7x7 according to  
DIN EN 12385-4:2008

cable strength: minimum 1570 N/mm<sup>2</sup>

different couple elements:           - fork  
  - hinge  
  - ring  
  - connecting thread

remark:

Only for static loads. Cable holders are inappropriate for all kind of dynamic, movable suspensions.

**Factory(ies):** 14229

Page 2 of 2